

Multi Grabs

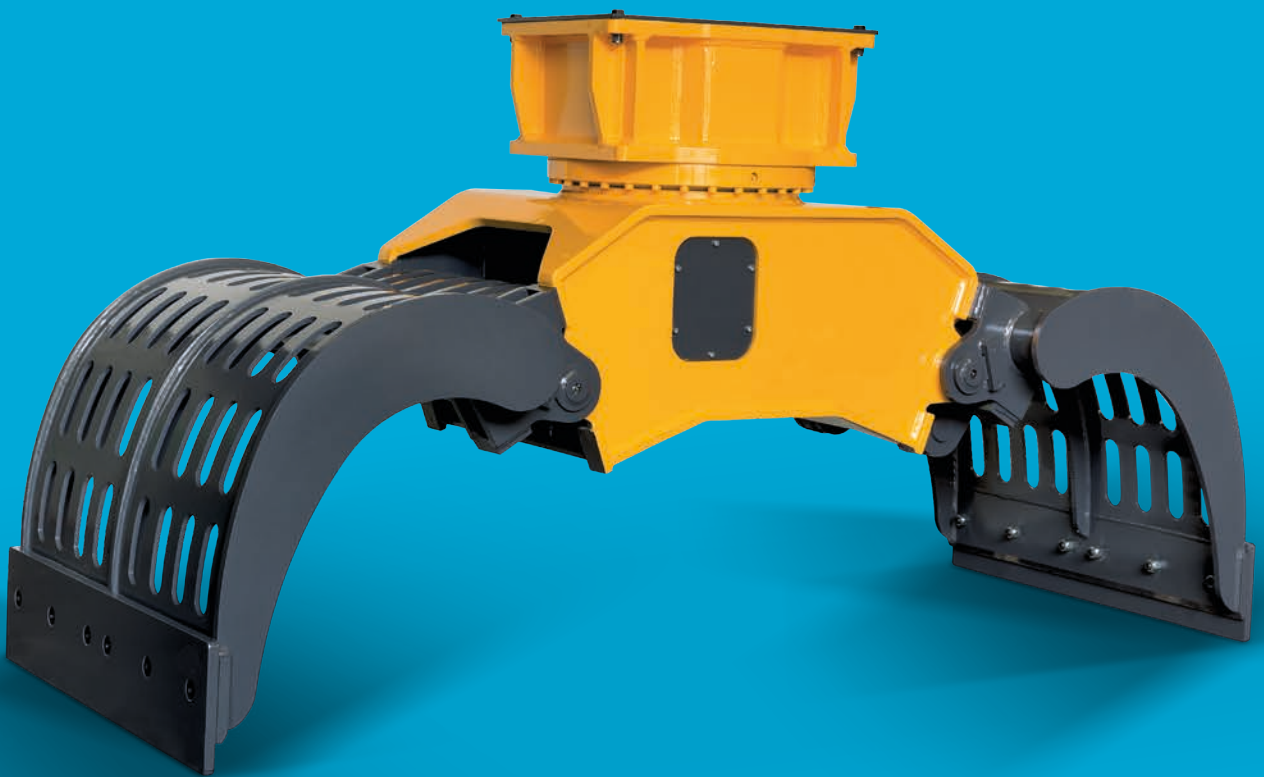
IMG S - Sorting Jaws

IMG D - Demolition Sorting Jaws

IMG H - Material Handling Jaws

IMG L - Loading Jaws

IMG T - Timber Jaws





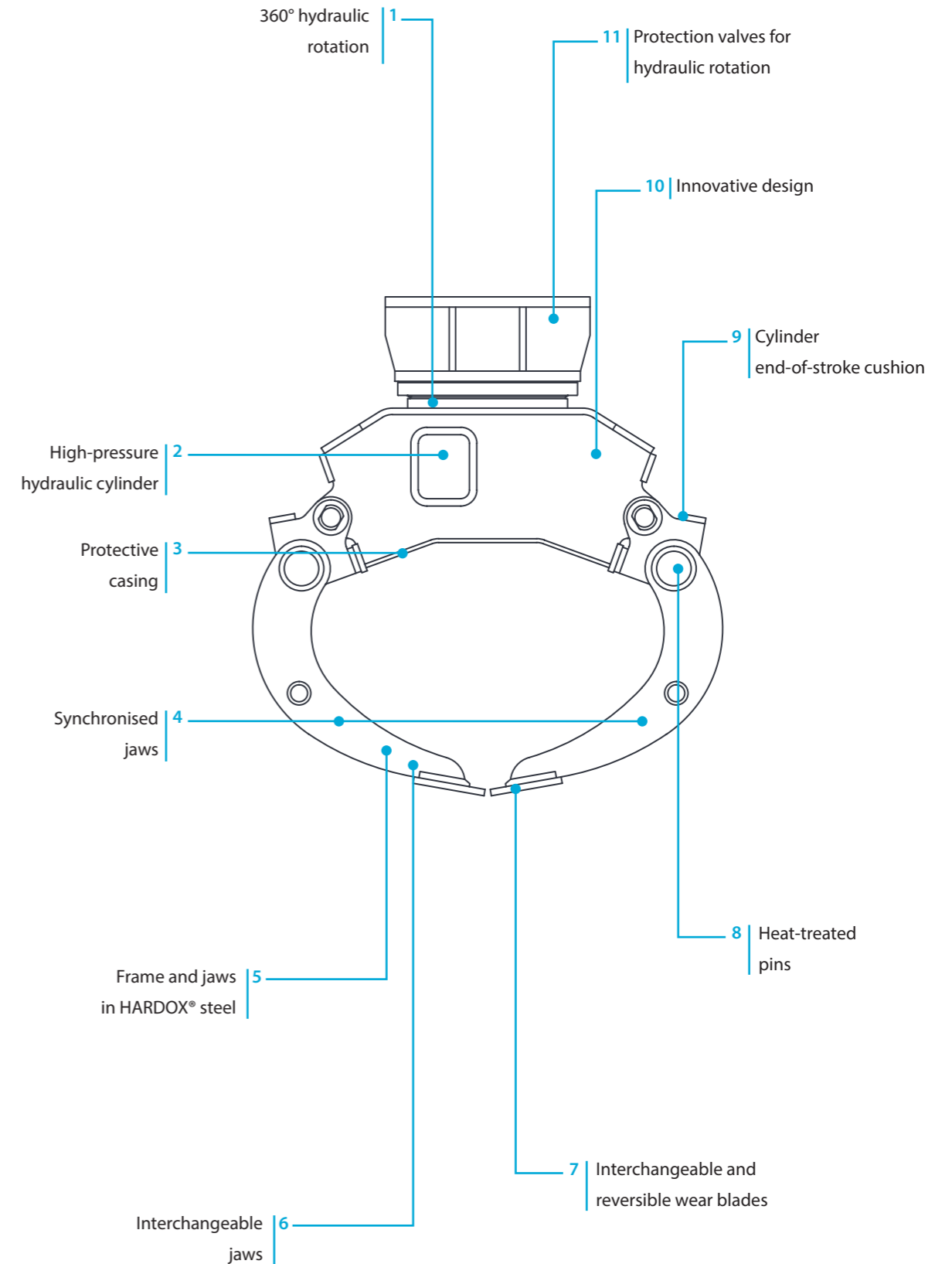
IMG jaws

Years of experience have enabled Indeco to meet the specific demands of the market by designing and developing – with all our usual excellence in terms of innovation, quality and reliability – this line of equipment for a wide range of sectors, from demolition to forestry jobs. The five different models of Indeco IMG jaws run on the same hydraulic system, an upgrade compared with the previous IDG system, combined with the 360° rotation mechanism found on all of Indeco's other rotating products. Its innovative design features, specifically created to handle each product variant, and its use of special HARDOX® wear-resistant steels, have helped to combine some key features such as outstanding robustness and light weight, as well as above-average payload and gripping force. Its exceptional manoeuvrability, its mounting bracket compatible with other Indeco products, the efficiency of its hydraulic system which ensures maximum precision in handling and is cheap to run – just some of the extra qualities that make Indeco IMG jaws such safe and reliable partners. Having such a wide range of models, in each of the five product variants, means there is always a perfect combination for your carrier, no matter what size it is.



Characteristics of Indeco's Multi Grabs

The full 360° hydraulic rotation [1] ensures better grip in all working conditions. The high-pressure hydraulic cylinder [2] improves gripping and demolition force. The hydraulic system is equipped with protective casing [3] for the cylinder and internal linkages. The synchronised jaws [4] enable smooth movements and handling of thin materials. The frame and jaws [5] are made of HARDOX® wear-resistant steel. The interchangeable jaws [6] are available in 5 different versions depending on the material to be handled and the specific use required. The wear blades [7] are interchangeable and reversible, and you can mount teeth for better efficiency and reduction of maintenance costs. The pins [8] are heat-treated to improve strength. The cylinder is equipped with an end-of-stroke cushion [9]. The innovative design [10] provides better grip, easier handling, and an above-average load volume. The hydraulic rotation mechanism is equipped with protection valves [11].





Technical Data	IMG 300	IMG 400	IMG 600	IMG 1200
Type of carrier	1 3	1 3	1 3 4	4 5
Excavator weight	2 ÷ 6 tons	3 ÷ 10 tons	5 ÷ 16 tons	12 ÷ 22 tons
Maximum working pressure	220 bars	300 bars	300 bars	300 bars
Maximum oil delivery	30 l/min	30 l/min	50 l/min	70 l/min
Hydraulic connections for cylinder	3/8"	1/2"	1/2"	3/4"
Maximum rotation pressure	100 bars	100 bars	100 bars	100 bars
Maximum rotation oil flow	10 l/min	10 l/min	10 l/min	20 l/min
Hydraulic connections for rotation	3/8"	3/8"	3/8"	1/2"
Maximum force at blade/teeth	2100 Kg	3000 Kg	4000 Kg	6000 Kg
Compatibility of attachment plate with hammer	HP 400	HP 900	HP 900	HP 2000 - HP 2500

N.B. All illustrations and numerical data in this catalog are purely indicative and subject to change at our discretion and without notice. We therefore reserve the right to modify them with a view to improving and continuously developing our product.



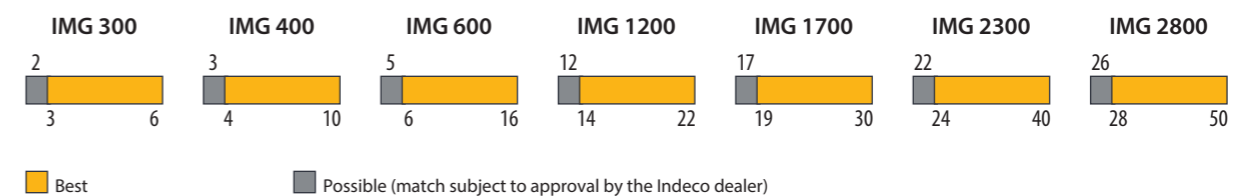
Technical Data	IMG 1700	IMG 2300	IMG 2800
Type of carrier	4 5	5	5
Excavator weight	17 ÷ 30 tons	22 ÷ 40 tons	26 ÷ 50 tons
Maximum working pressure	320 bars	350 bars	350 bars
Maximum oil delivery	80 l/min	130 l/min	160 l/min
Hydraulic connections for cylinder	3/4"	3/4"	3/4"
Maximum rotation pressure	110 bars	110 bars	110 bars
Maximum rotation oil flow	20 l/min	30 l/min	30 l/min
Hydraulic connections for rotation	1/2"	1/2"	1/2"
Maximum force at blade/teeth	7000 Kg	10000 Kg	12000 Kg
Compatibility of attachment plate with hammer	HP 2000 - HP 2500	HP 3000 ÷ HP 4000	HP 3000 ÷ HP 4000

Carrier key



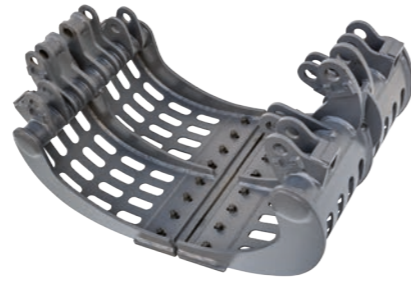
Compatibility

Suggested uses on machines with an overall weight (in tons):



IMG S - Sorting jaws

Indeco IMG S sorting jaws are the ideal tools for sorting waste materials from demolition work, from clearing stony ground, and from dredging of rivers and seas.

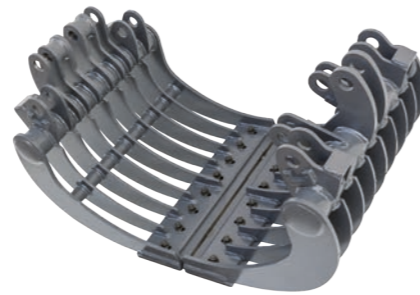


Sorting Jaws	IMG 300 S	IMG 400 S	IMG 600 S	IMG 1200 S
Attachment operating weight*	285 kg	380 kg	570 kg	1140 kg
Load capacity	130 l	190 l	320 l	620 l
Jaw width	800 mm	900 mm	1070 mm	1300 mm
Maximum opening	1400 mm	1500 mm	1700 mm	2200 mm
Depth	550 mm	600 mm	700 mm	900 mm

Sorting Jaws	IMG 1700 S	IMG 2300 S	IMG 2800 S
Attachment operating weight*	1610 kg	2180 kg	2650 kg
Load capacity	900 l	1350 l	1700 l
Jaw width	1470 mm	1630 mm	1750 mm
Maximum opening	2500 mm	2700 mm	3000 mm
Depth	1000 mm	1100 mm	1200 mm

IMG D - Demolition Sorting Jaws

Indeco IMG D demolition sorting jaws are ideal for light demolition jobs, such as demolishing wood and brick structures, and can also be used to select and handle waste materials. Their unique structure, outstanding manoeuvrability, power and high payload are ideal for recycling and recovery.



Demolition Sorting Jaws	IMG 300 D	IMG 400 D	IMG 600 D	IMG 1200 D
Attachment operating weight*	300 Kg	400 kg	600 kg	1200 kg
Load capacity	130 l	190 l	320 l	620 l
Maximum opening	1400 mm	1500 mm	1700 mm	2200 mm
Depth	550 mm	600 mm	700 mm	900 mm

Demolition Sorting Jaws	IMG 1700 D	IMG 2300 D	IMG 2800 D
Attachment operating weight*	1700 kg	2300 kg	2800 kg
Load capacity	900 l	1350 l	1700 l
Maximum opening	2500 mm	2700 mm	3000 mm
Depth	1000 mm	1100 mm	1200 mm

*The operating weight of the equipment includes mounting bracket compatible with Indeco construction standards. Any differences in weight may be due to a different mounting bracket configuration.

IMG H - 3+2 Material Handling Jaws

Designed to facilitate handling of large objects such as scrap metal, vehicles for demolition, and other demolition scrap, their hydraulic rotation system and the strength of their interlocking teeth provide a safe powerful grip.

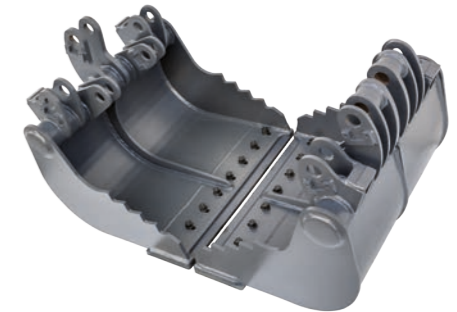


Material Handling Jaws 3+2	IMG 300 H	IMG 400 H	IMG 600 H	IMG 1200 H
Attachment operating weight*	320 kg	425 kg	640 kg	1280 kg
Maximum opening	870 mm	930 mm	1085 mm	1360 mm
Depth	540 mm	570 mm	660 mm	830 mm

Material Handling Jaws 3+2	IMG 1700 H	IMG 2300 H	IMG 2800 H
Attachment operating weight*	1800 kg	2450 kg	2990 kg
Maximum opening	1550 mm	1710 mm	1840 mm
Depth	950 mm	1050 mm	1130 mm

IMG L - Loading Jaws

The geometry of the Indeco IMG L loading jaws is designed for maximum load, making them ideal for moving earth, gravel, sand, mud, boulders, agricultural and industrial waste, urban waste, minerals, etc.



Loading Jaws	IMG 300 L	IMG 400 L	IMG 600 L	IMG 1200 L
Attachment operating weight*	310 kg	415 kg	630 kg	1250 kg
Load capacity	150 l	190 l	320 l	620 l
Maximum opening	1400 mm	1500 mm	1700 mm	2200 mm
Depth	550 mm	600 mm	700 mm	900 mm

Loading Jaws	IMG 1700 L	IMG 2300 L	IMG 2800 L
Attachment operating weight*	1780 kg	2400 kg	2930 kg
Load capacity	900 l	1350 l	1700 l
Maximum opening	2500 mm	2700 mm	3000 mm
Depth	1000 mm	1100 mm	1200 mm

N.B. All illustrations and numerical data in this catalog are purely indicative and subject to change at our discretion and without notice. We therefore reserve the right to modify them with a view to improving and continuously developing our product.

IMG T - Timber Jaws

Designed to combine maximum gripping force with the lightest possible weight, Indeco IMG T grabs facilitate the handling of large tree trunks in forestry operations.



Timber Jaws	IMG 300 T	IMG 400 T	IMG 600 T	IMG 1200 T
Attachment operating weight*	310 kg	415 kg	630 kg	1250 kg
Maximum opening	870 mm	930 mm	1085 mm	1360 mm
Depth	540 mm	570 mm	660 mm	830 mm

Timber Jaws	IMG 1700 T	IMG 2300 T	IMG 2800 T
Attachment operating weight*	1780 kg	2400 kg	2930 kg
Maximum opening	1550 mm	1710 mm	1840 mm
Depth	950 mm	1050 mm	1130 mm



*The operating weight of the equipment includes mounting bracket compatible with Indeco construction standards. Any differences in weight may be due to a different mounting bracket configuration.

N.B. All illustrations and numerical data in this catalog are purely indicative and subject to change at our discretion and without notice. We therefore reserve the right to modify them with a view to improving and continuously developing our product.

Accessories

1 | Indeconnect system

New remote monitoring system, based on the principles of the Internet of Things, to prevent equipment obsolescence and keep high performance.

The '**Indeconnect**' system consists of a **device** equipped with 4G technology for a wireless connection to the network, to be mounted on the equipment, and a cloud-based **web platform** you can access from mobile devices (with an app) or from PC, that lets you view the data transmitted in real time by each installed device: working hours, working position in space, hydraulic oil temperature, ambient temperature, GPS position, and more.

Through Indeconnect you can:

- **Monitor productivity**, making sure each Indeco tool is working as intended
- **Check operations**, verifying in real time the various internal and external parameters of the equipment to make sure that it is used in optimal conditions and correctly
- **Increase security**, by remotely checking the position of the equipment through GPS
- **Plan maintenance**, monitoring the health of each Indeco tool in real time, also through the automatic alert and messaging system that lets you order spare parts and reduce machine downtime to a minimum
- **Optimise rental**, by supervising and monitoring the management of rented equipment.

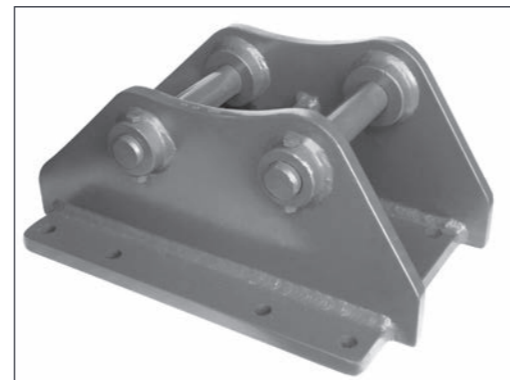
2 | Mounting brackets

Each mounting bracket model can be used with all Indeco products in the same class.

1 |



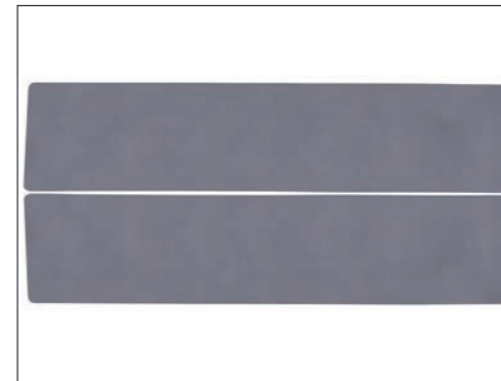
2 |



3 |



4 |



5 |



3 | Connecting hoses

We recommend using original Indeco high- and low-pressure hoses to connect various tools to the hydraulic system on the carrier.



4 | Wear blades


Interchangeable and reversible wear blades for greater efficiency and lower maintenance costs; teeth can be mounted.

5 | Quick change teeth - IMG

Teeth with quick-change inserts are available upon request. Easy to replace during maintenance, they are ideal for use in quarries, where the equipment is subject to consistently high levels of wear and tear.

Application areas

		S	D	H	L	T
 Demolition & renovation	Light Demolition		○			
	• Demolition of masonry structures		○			
	• Brickwork		○			
	• Natural stone		○			
	• Renovation of interiors		○			
	• Autoclaved aerated concrete					
	Demolition of non-reinforced concrete structures		○			
	• Primary demolition of lightweight and standard concrete		○			
	• Primary demolition of heavyweight concrete					
	• Wall elements		○			
	• Secondary demolition		○			
	Composite steel & concrete structure demolition					
	• Primary Demolition of Lightweight and Standard reinforced concrete					
	• Primary demolition of heavyweight steel - reinforced concrete					
	• Secondary Demolition floors, slabs and beams					
• Separating rebars from pillars and struts						
• Fiber-reinforced concrete						
• Cutting rebars and steel reinforcements						
Demolition of metallic buildings and structures						
• Demolition of refineries						
• Cutting of Metal and steel structures						
• Cutting steel girders/beams						
• Cutting reinforcements						
Sorting and Loading		○	○			
• Sorting		○	○			
• Loading		○			○	
• Waste handling		○		○	○	
• Site clean-up		○		○	○	
Pavement demolition						
• Asphalt						
• Concrete			○			
• Composite surfaces			○			
 Earth Moving and Construction	Earth moving works					
	• Trenching					
	• Ground excavation					
	• Floor leveling					
	• Soil compaction					
	• Trench compaction					
	• Loading soil or bulk material		○			○
	Foundation works					
	• Building foundation excavation					
	• Ground leveling					
Building construction						
• Foundation pile driving						
• Compaction around pillars						
 Material Handling	• Loading soil or bulk material		○			○
	• Handling rock or breakwaters				○	○
	• Material transport, storage, positioning		○		○	○
	• Timber log handling				○	○

		S	D	H	L	T
 Infrastructures	Tunnelling					
	• Tunnel excavation					
	• Roof, face & rib scaling					
	Underwater application					
	• Dredging					
	• Dock deepening & extension					
	• Canal deepening & extension					
	• Loading soil or bulk material		○			○
	• Handling rock or breakwaters				○	○
	Trenching					
• Oil & gas, water & sewage (deep trenching)						
• Trenching						
• Trench soil compaction						
Road construction						
• Pile driving and guard rail driving						
• Asphalt repair						
• Maintenance work (driveways, sidewalks and parking lots)						
• Block paving						
 Agriculture and Forestry	Gardening & Landscaping					
	• Fencing					
	• Ground excavation					
	• Rock breaking					
	• Pit planting					
	• Stump splitting					
	• Golf course maintenance					
	• Root and stump grinding					
	• Hedgerow clearance and rejuvenation					
	• Grinding of logging residues					
Forestry						
• Timber log handling				○	○	
• Maintenance of green area, small trees and brush						
• Creation and upkeep of woodland corridors and firebreaks						
• Tree clearing						
• Vegetation clearing						
• Branch clearing						
 Recycling	Processing					
	• Scrap material processing					
	• Cutting tyres					
	• Processing rail cars					
	• Processing cars, trucks and general automotive					
	• Cutting tanks					
	• Cutting of railway tracks, tramway rails, and underground rails					
	Handling and sorting					
	• Scrap material handling		○		○	
	• Scrap material sorting				○	
• Urban waste		○		○		
• Industrial waste		○		○		
• Wood and tyres				○	○	
Downsizing and sorting						
• Material downsizing and sorting in recycling quarries						
Recycling of ferrous material						
• Recycling of ferrous material						

The full range of other Indeco products

Products		Weight		Products		Weight		Products		Weight	
IFP	8 X	750	Kg	IHC	70	445	Kg	ISS***	20/30	3650	Kg
IFP	13 X	1300	Kg	IHC	75	485	Kg	ISS***	25/40	4800	Kg
IFP	19 X	1800	Kg	IHC	150	970	Kg	ISS***	30/50	6100	Kg
IFP	28 X	2800	Kg	IHC	250	1280	Kg	ISS***	35/60	7600	Kg
IFP	35 X	3450	Kg	IHC R	50	425	Kg	ISS***	45/90	10400	Kg
IFP	45 X	4550	Kg	IHC R	70	630	Kg	IRC***	20	2800	Kg
IRP	5 X	570	Kg	IHC R	75	670	Kg	IRC***	30	4200	Kg
IRP	11 X	1150	Kg	IHC R	150	1185	Kg	IMH	3	295	Kg
IRP	18 X	1700	Kg	IHC R	250	1520	Kg	IMH	5	535	Kg
IRP	23 X	2300	Kg	IMG S**	300	285	Kg	IMH	6	555	Kg
IRP	29 X	2950	Kg	IMG S**	400	380	Kg	IMH	8	595	Kg
IRP	36 X	3600	Kg	IMG S**	600	570	Kg	IMH	10	735	Kg
IRP	45 X	4500	Kg	IMG S**	1200	1140	Kg	IMH	14	1045	Kg
IMP*	15	1500	Kg	IMG S**	1700	1610	Kg	IMH	20	1495	Kg
IMP*	20	2080	Kg	IMG S**	2300	2180	Kg	IMH	28	1540	Kg
IMP*	25	2400	Kg	IMG S**	2800	2650	Kg	IMH	4.2 SS	1400	Kg
IMP*	35	3500	Kg	ISS***	5/7	570	Kg	IMH	SG16	840	Kg
IMP*	45	4500	Kg	ISS***	8/13	1250	Kg	IMH	SG20	840	Kg
IHC	50	200	Kg	ISS***	10/20	2400	Kg				

*Crusher configuration - **Sorter configuration - ***Third-member configuration



INDECO ind S.p.a.

viale Lindemann, 10 z.i. - 70132 Bari - Italy

PH +39 080 531 33 70 - **F** +39 080 537 79 76

@ info@indec.it - www.indec.it/en

AUTHORISED DEALER